







SiteKiosk


Kiosk browser software for safeguarding public access computers, kiosks, displays and tablets. SiteKiosk protects your operating system from unwanted manipulations and provides a secure browser (IE or Chrome based).

Free trial at www.provisio.com

Windows

 Windows 10 Compatible	 Windows 8 Compatible	 Windows 7 Compatible	 Chrome Supported	 Internet Explorer Supported
---	--	--	--	---

Android

 Android 5.x Compatible	 Android 4.x Compatible
--	--

What is SiteKiosk?

SiteKiosk Windows

SiteKiosk is the ideal solution if you want to display web-based content (HTML, Flash, PDF, videos, etc.) and applications in a secured and stable environment on publicly accessible Windows 10 / 8 / 7 computers with or without Internet access. With SiteKiosk you can restrict access to web pages, the operating system, system settings and programs individually. Your computer will be secured at all times from boot up until shutdown.

SiteKiosk provides the option to charge for the usage of your systems. Also included is a digital signage solution which can be monitored and operated by our remote management solution SiteRemote. In an upcoming release of SiteKiosk our new digital signage solution, SiteCaster CMS (Content management system), will also be supported.

SiteKiosk Android

SiteKiosk is the ideal solution for Android systems in public locations. With SiteKiosk Android you can secure tablet devices and monitor them with our remote management system SiteRemote.

Popular uses for SiteKiosk Android are as promotional advertisement, display of product information and customer surveys. SiteKiosk Android offers the same basic features as SiteKiosk Windows but due to differences in operating systems they are not completely identical.

You will find a description of SiteKiosk Android on [page 15](#).

SiteKiosk is the right solution for:

- PCs in Libraries, Schools & Universities
- PCs in Museums, Organizations & Churches
- PCs at Trade Shows & Exhibits
- Retail advertisement / product information and Digital Signage
- Corporate access channels for Internet / Intranet
- Ticket dispensers, Kiosk & Internet terminals
- Employee Self Service
- Remote Administration
- Customer PCs in shops and hotels
- Public Online Banking terminals
- City Information Terminals
- IT & Telecommunication
- Publishing & Media
- Restaurants & Tourism
- Chemistry & Pharmacy
- Game Stations & Arcades
- Automobile industry, Logistics and Transportation

Security Concept

A customer statement:

“You would not believe how easy a small kid can paralyze an unprotected computer.”

Example: Press simply the key combination left Alt + left Shift + Print Screen and confirm by pressing “OK”. This will activate “High Contrast” mode on your computer. (Press the same key combination again to reset the screen.)

Full time security for your piece of mind

While this form of user manipulation seems harmless, it still cause a negative impact on your business. As an administrator, you need to make sure the computers you make available in public locations are not made unusable either intentionally or because of error. System-critical key combinations need to be blocked and users should not have access to the operating system.

Start Management

The system will start automatically based on the start settings you have chosen. The system is secured at boot up even using a normal keyboard and mouse.

Security Management

Multi-level security only grants end users access to view specific web content and / or use certain programs.

Hardware Management

You can restrict access to drives, keyboard functions, mouse functions, USB ports and printing functions or block them completely.

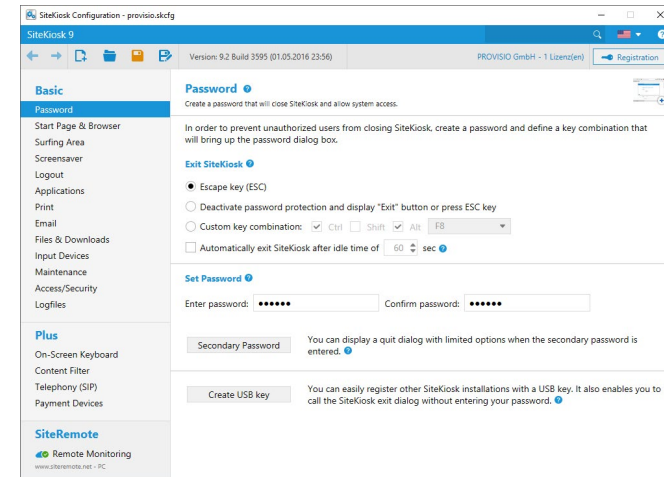


Figure 1: Password Protection



Figure 2: System Security Manager

24/7 Availability

Stability and Reliability

SiteKiosk has numerous internal maintenance functions for a stable and reliable system with maximum uptime that runs smoothly. For situations like server maintenance or network problems, SiteKiosk has an integrated feature to show offline content as a backup until the online content is available again.

Error Detection & Auto Recovery

Crashes, errors and other problems are automatically detected and resolved using the integrated software watchdog.

Logout Management

The start screen you choose will be automatically restored after each use. All windows and programs will also be closed. Additionally, all traces of the user session such as temporary files, browser history, login information and cookies are deleted.

Remote Management

With our remote maintenance solution, SiteRemote, you can administer your terminals, kiosks and computers, distribute data and check the device status at any time.

Screensaver

If the computer is not in use, the integrated screensaver will start automatically and displays custom content of your choosing. You also have the option to replace the local SiteKiosk screensaver with digital signage content that is published through SiteRemote Server.



Figure 3: Blocked Unauthorized Action

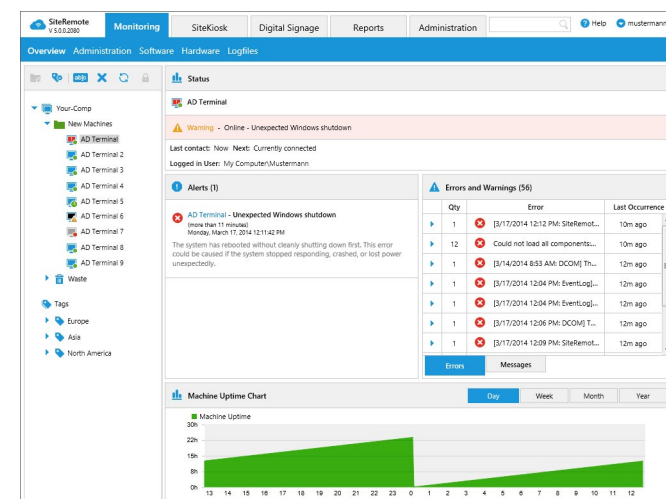


Figure 4: Runtime Diagram

Customizable User Interface

Numerous Design Options

SiteKiosk provides you with a flexible design that you can customize according to your requirements. Some design examples can be found in the images on the right. You have a choice between two browser engines, Chrome or Internet Explorer. The browser skin can be customized to meet your design requirements. The Chrome Browser offers different color presets, which through manual color selection, can be customized further. The display size of the toolbar can also be customized.

We can provide individual customizations to the browser skins that are not available in the default customization options as a paid solution. For more information, please contact us through our Customer Support Center at www.provisio.com.

Browser Designs

In SiteKiosk not only the appearance of the browser interface but also the functionality can be customized. You can, for example, activate / deactivate toolbar buttons and configure custom buttons. Additionally, using an editor it is possible to create a completely custom interface or desktop that matches your corporate identity. You can embed program icons, links, videos and images in the custom interface.

Start Page

In SiteKiosk a custom HTML page, Flash, PowerPoint, or a PDF document can be set up as your start page.

Fullscreen Mode

SiteKiosk can display all content in fullscreen mode. You also have the option to set up a full screen display for certain content only such as www.your-comp.com.

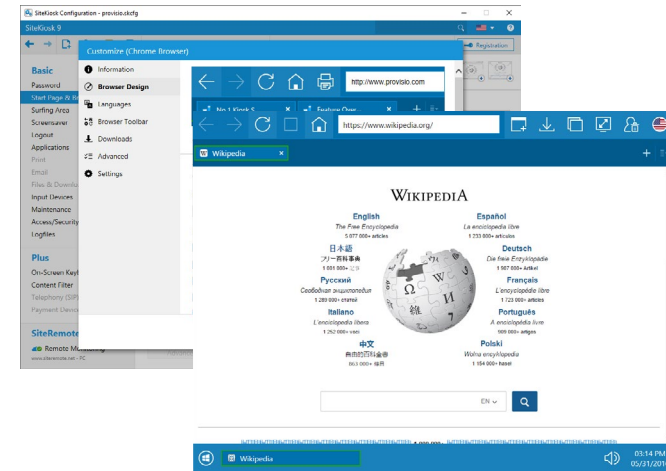


Figure 5: Chrome Browser Design

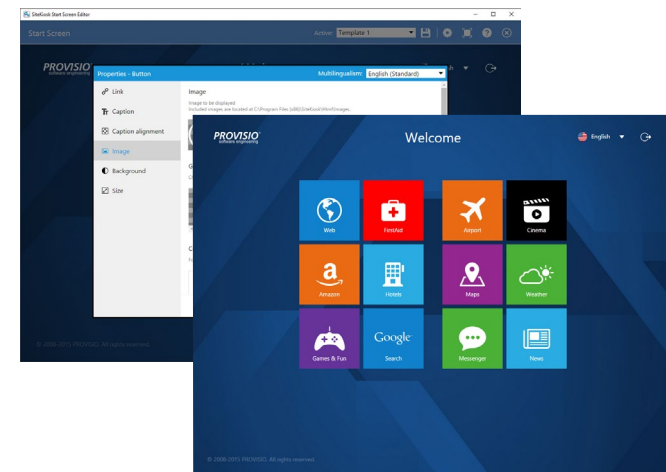


Figure 6: Start Screen Editor

SiteKiosk Object Model

Custom-developed Solutions

You do not need any programming knowledge to use SiteKiosk. For more complex projects with very precise specifications individual customizations may be required.

All visible components of the interface are based on open-source scripting and scripting languages such as Javascript, XML and HTML and can be customized.

Independence

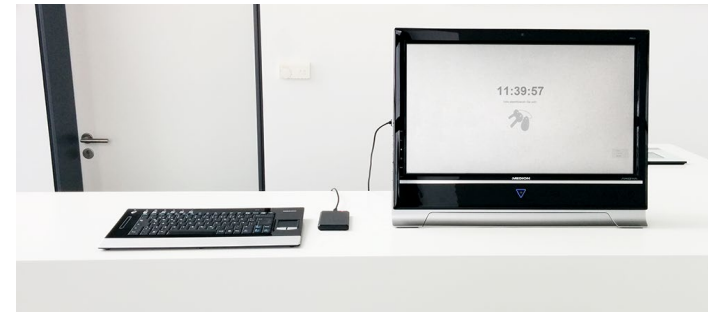
As these programming languages are standardized, a web developer can customize the software for you without extensive training. This allows you to independently develop customizations without third party involvement.

SiteKiosk Object Model

In addition, the [SiteKiosk Object Model](#), is a powerful tool that is available to developers. The SiteKiosk Object Model expands the normal Javascript command set by several hundred SiteKiosk-specific objects, methods, events / properties and allows complete control over software programming.

In this way you can use interfaces (APIs) for other software to monitor it from SiteRemote as well as update data and display error messages.

Extensive documentation with examples is provided in the software help file.



```
<script>
var callbackFunc = function (data, deviceName) {
    document.getElementById("text").innerHTML =
        deviceName + " - " + data;
};

function GetDevices() {
    var devices = siteKiosk.devices.getAll();
    document.getElementById("devices").innerHTML =
        JSON.stringify(devices);
}

function registerDevice() {
    var deviceName = document.getElementById("devicename").
        value;

    if(deviceName == "")
        return document.getElementById("foundDevice").
            innerHTML = "No device found!";

    var device = siteKiosk.devices.getByname(deviceName);

    if(device == null)
        return document.getElementById("foundDevice").
            innerHTML = "No device found!";

    device.valueChanged(callbackFunc);

    return document.getElementById("foundDevice").
        innerHTML = "Registered device: " +
            JSON.stringify(device);
}
</script>
```

Figure 7: Example timesheet application with an RFID card reader connected as HID.

Easy Configuration

Quick and Easy

Configuring SiteKiosk is designed to be very simple. You can quickly set up SiteKiosk without any programming experience. The included configuration editor guides you step-by-step through the various settings.

XML as Storage Format

Configurations are saved in XML format with the file extension .skcfg.

This allows you to also edit the files in a text editor. This makes transferring a configuration file to other terminals easily possible, even if small adaptations are necessary.

Documentation and Help

There are “Help” buttons available on each configuration page. Using these you can find additional information on the available features and their operation.

Online Support Center

You can find additional support by contacting us through our online support center at www.provisio.com.

Remote Configuration

Using SiteRemote, you can make configuration changes or distribute complete configurations without visiting the location.

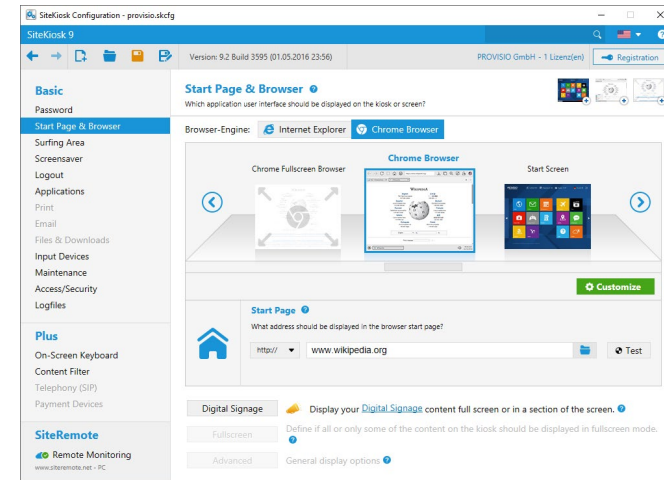


Figure 8: Configuration Editor



Figure 9: Configuration example with browser skin

Remote Maintenance

Remote Computer Management at your Fingertips

SiteRemote is a software solution for remote monitoring and maintenance of kiosks and public computers that are running SiteKiosk software. SiteRemote is a subscription-based Cloud solution and also available as stand alone version for large companies. You can use SiteRemote to view the status of your SiteKiosk clients and perform remote maintenance over the Internet. Our SiteRemote solution is available for a small annual subscription fee. Alternatively, you can purchase the SiteRemote server software to run on your server in-house for a one-time license fee.

Monitoring and Management

SiteRemote offers a variety of monitoring functions for the hardware side of kiosks and public computers and to get an overview of individual machine status. Graphs and reports allow you to track the status of hardware components like CPU load, memory usage and network connectivity etc. On the software side, you can use SiteRemote to monitor runtime and usage of your systems along with error alerts and log entries and analyze them statistically. Additionally, SiteRemote gives you control over the administration of your client machines. You can set up teams of users and control the privileges of individual users who manage your remote clients. SiteRemote offers you the option to transfer data, change configurations and perform reboots. Digital signage campaigns can even be published and managed through SiteRemote. Our remote desktop solution also allows you to directly access individual systems.

SiteRemote Brochure

More information about SiteRemote is available as a [PDF brochure](#) on our [website](#).

Free 30-day Trial

Test www.SiteRemote.net. The free trial account allows you to manage up to 50 terminals and offers 500 MB of data transfer volume.

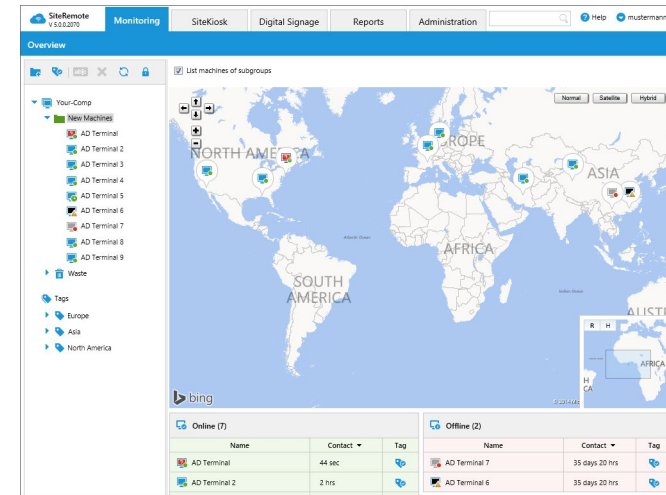


Figure 10: Remote Monitoring

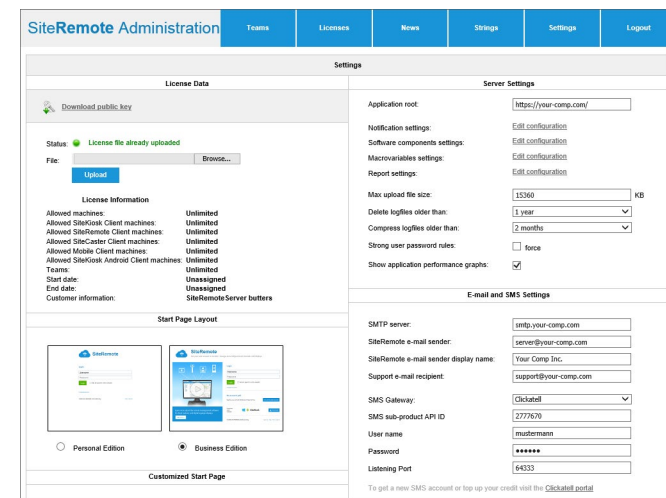


Figure 11: Administration with SiteRemote

Digital Signage / Content Management

Digital Signage

PROVISIO provides a software solution for the creation, management and publishing of media content for your digital signage displays. Configure and publish campaigns from your SiteRemote Cloud account to your clients based on the schedule you set up with just a few clicks. The watchdog function ensures that there is no extended downtime if the program stops responding due to critical system malfunctions like too little available memory or video codec errors.

Create Campaigns

Default layouts help you to create a campaign easily and to customize it individually. You can also use any available resolution for your campaigns (E.g. full HD). Simply arrange your media content by dragging & dropping in the timeline. Our DS solutions support for a wide array of popular content formats, such as Images (PNG, JPG, ...), Video (H.264, WMV ...), web pages (HTML, Flash) and text (RSS, static and ticker).

Create Schedule

Plan a display schedule for your campaigns and change campaign priorities and playback times according to your requirements.

Publish

With just a few clicks you can distribute content across up to 10,000 digital signage screens. You have the choice of publishing via peer-to-peer or encrypted via HTTPS / SSL.

SiteCaster CMS (Content-Management-System)

Our new and flexible version SiteCaster CMS is an add-on which will cover the area of Digital Signage with more possibilities and functions in future times. (Planned for Version 9.3)

Note / Footnote: Optional product add-on for monthly fee.

More information on www.sitekiosk.com

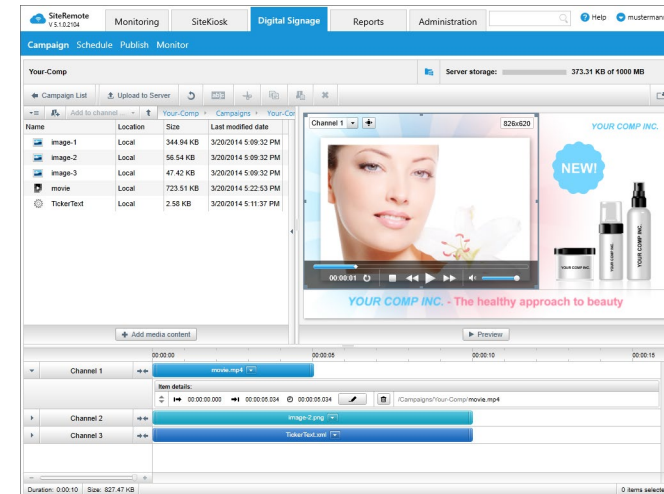


Figure 12: Digital signage user interface

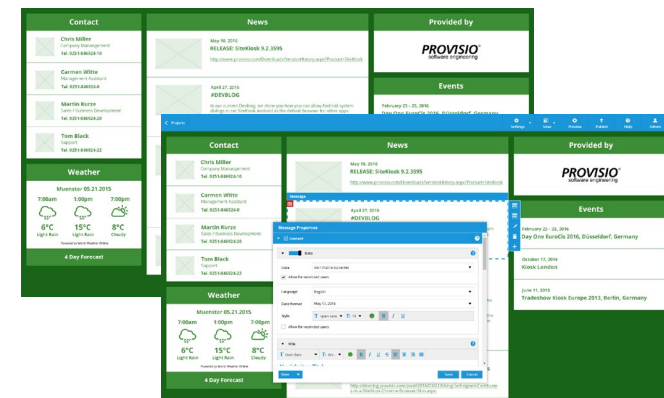


Figure 13: CMS editor view and output

Basic Version

SiteKiosk is available in three different license packages: Basic, Plus and Nonprofit.

Below, the features of the Basic version are explained in more detail:

System Security Manager

The System Security Manager allows you to easily safeguard operating systems Windows 10 / 8 / 7. Optimal security settings are configured by default.

Password

Through password protection and a custom key combination only authorized users will have access to the system.

Start Page & Browser

In the configuration editor you can choose a browser interface based on the Chrome or Internet Explorer browser engine and set up a start page that each user will see at the beginning of their session. You can also choose the option to start SiteKiosk in digital signage mode here.

Surfing Area

This feature allows you to specify which local paths (file://) or Internet addresses (http:// or https://) can be accessed by the end user.

Screensavers and Secondary Monitor

When the terminal is not in use, the screensaver can play videos, advertising and digital signage campaigns. On an optional second monitor, which per default cannot be reached via mouse, different media (video, images, web pages) or advertisements can be displayed and looped through. The content can be provided locally or deployed from a server.

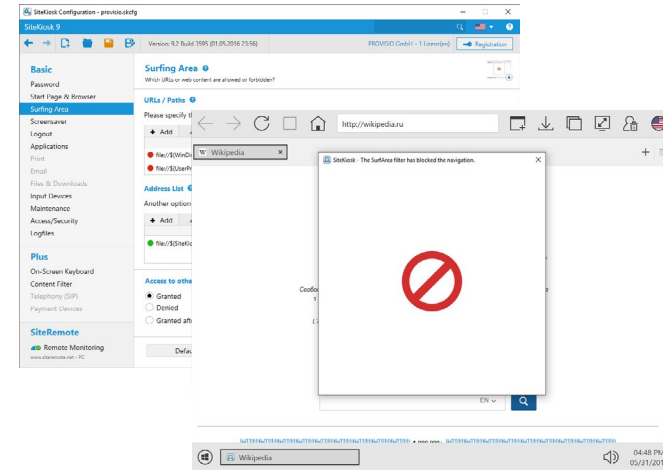


Figure 14: Restricted Surfing Area

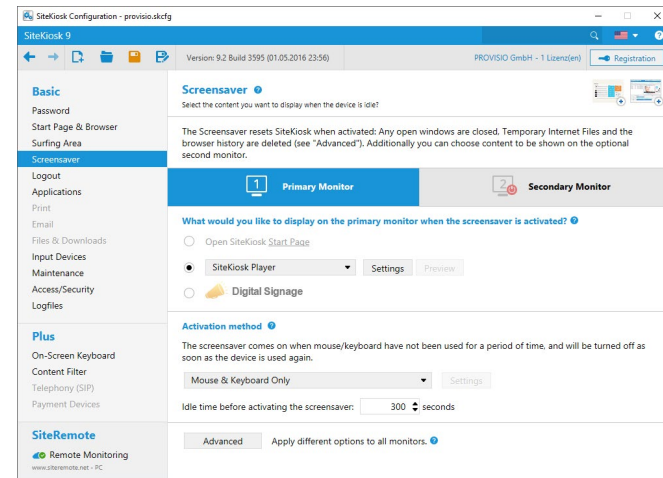


Figure 15: Screensaver and secondary monitor

Basic Version

Logout

In order to keep your user's data private, you can configure deletion of temporary internet files, certificates, cookies, and downloads under the logout options. This will ensure that after the session is completed, the system is reset to its original state. Additionally, there is an option to set a logout navigation as a goodbye message or to offer a survey etc.

Programs and Games

SiteKiosk allows you to start any external programs and games directly from the browser or automatically at every session. You can start allowed applications and games from the toolbar, the start menu or directly from within web pages. The programs you allowed are monitored by SiteKiosk and closed after the user logs out.

Input Devices

SiteKiosk supports any USB input device that provides data via keyboard emulation. The information is made available through the SiteKiosk Object Model. This gives you the option of a wide variety of input devices or sensors to use like RFID, smart card or magnetic stripe readers. This can be used, for example, to process information from employee badges for human resource (HR) applications.

Printing

SiteKiosk monitors all local and network printers and their print jobs. Print jobs can be charged by the page.

Email

SiteKiosk features an integrated email function which makes it possible to automatically send receipts or other information from the kiosk.

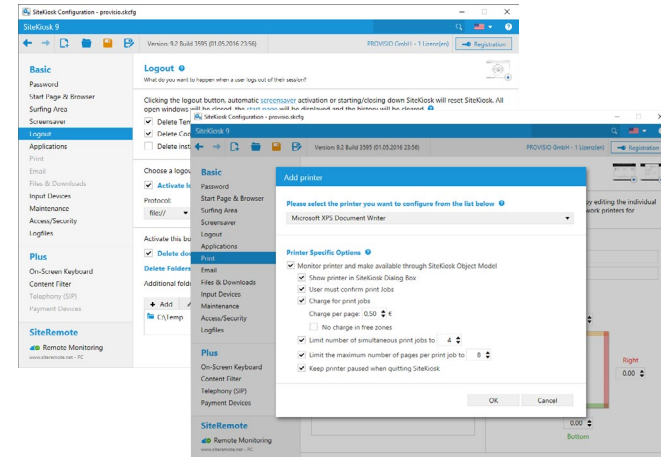


Figure 16: Logout and printing

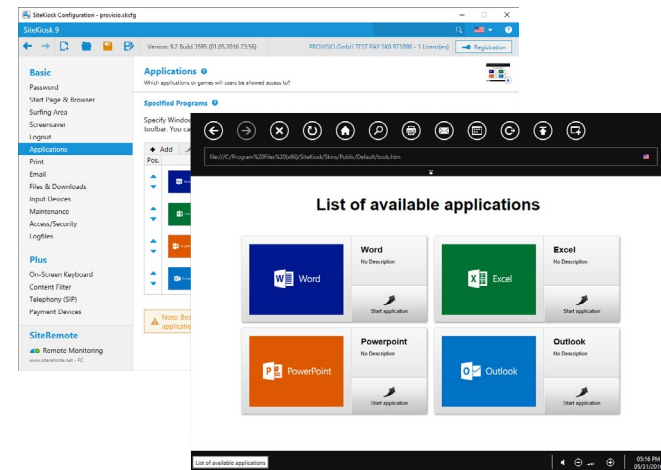


Figure 17: Program selection

Basic Version

Download Manager

Using the Download Manager options, downloads can be partially or completely restricted. You can limit the file size of downloads or only allow downloads from certain websites / URLs. You can also define which file types can be downloaded.

File Manager

The File Manager is used to provide limited and secure file access for users. You can define a secure folder location and specify whether the files should be automatically opened and displayed in the browser or opened through an allowed application.

System Maintenance

To prevent system crashes and memory problems, there are various maintenance functions and monitoring tools that ensure system stability.

Access and Security

With additional security settings and access options, you can make your system even more secure with additional browser-related access settings.

Log files

In SiteKiosk you can track usage, events, user behavior and even analyze this information remotely with SiteRemote.

Languages

You can provide users up to 26 different display languages. Displayed language information is stored in XML files and can be customized. At the end of a session, the default language you set up is automatically loaded.

Remap the Keys of the Keyboard

You can rewrite the function of each key with SiteKiosk. This is particularly useful for special keyboards with a reduced set of keys.

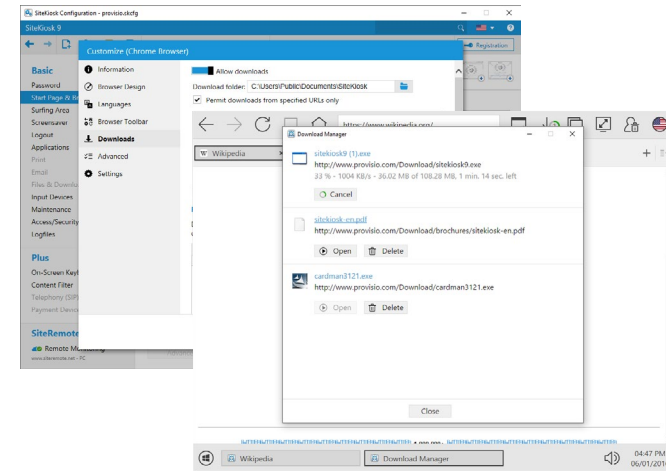


Figure 18: Download Manager

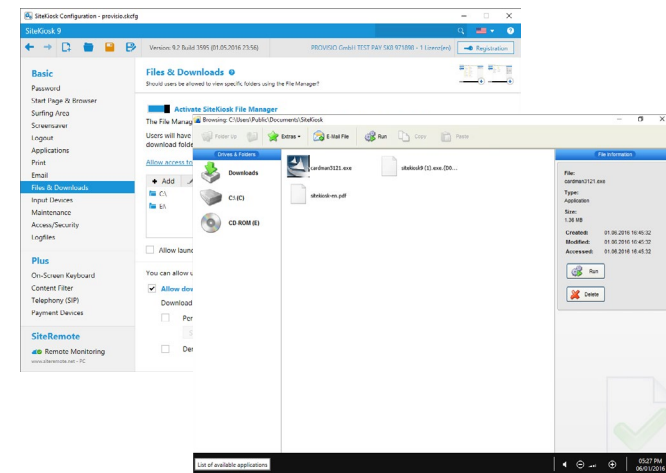


Figure 19: File Manager

Plus Version

The following information explains the additional features of SiteKiosk that are included with the Plus version:

On-screen Keyboard

In addition to the numerous keyboards already included, see www.provisio.com for keyboards with different layouts and features. SiteKiosk offers full support for touch screen environments.

Multilingual Keyboard Layouts

For multilingual applications, you can use keyboards with different keyboard layouts, for example, QWERTY, QWERTZ and AZERTY for English, German and French.

Visible and invisible

Do you want the on-screen keyboard only visible on certain websites, like a form page? No problem! Even the display position of the keyboards can be defined as X / Y coordinates.

Custom Keyboard Layouts

Thanks to the skin technology of SiteKiosk, our team can develop custom layouts for key arrangement and assignments to suit your needs.

Usage with Third Party Applications

The on-screen keyboards work with other programs like Microsoft Office.

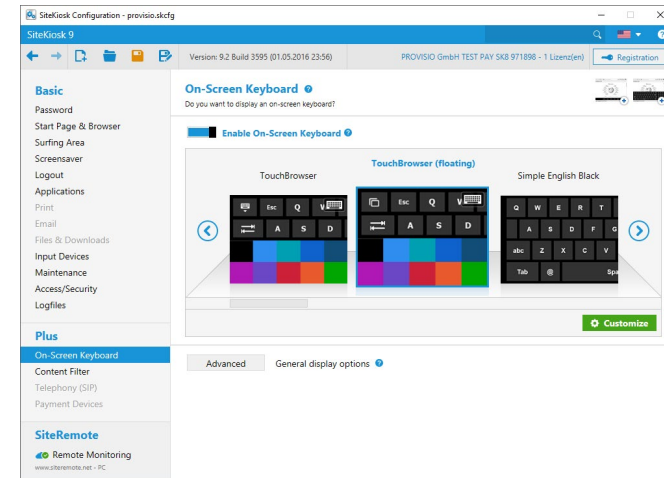


Figure 20: On-screen keyboard configuration

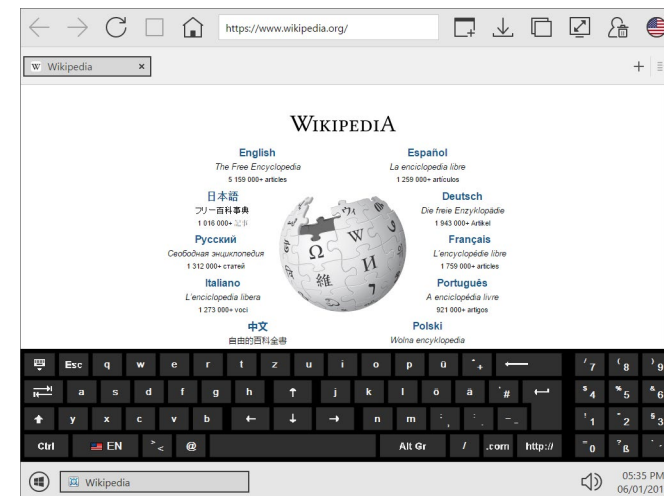


Figure 21: Example of a keyboard layout

Plus Version

Internet Content Filter

In many situations you may want to prohibit inappropriate content from being displayed in an open web surfing environment. For this reason, the SiteKiosk content filter was developed.

Filtering in Real Time

When a user opens a website it is checked by special algorithm in SiteKiosk and then either allowed or blocked. This process occurs in real time and cannot be influenced by the user. SiteKiosk can set explicit filter options regarding the surfing area such as Adult, Gambling, Drugs etc. and implicit filter options based on page content.

Criteria Database

The filter criteria database contains roughly 700,000 positive and negative reviewed domains (URLs) as well as numerous word criteria that are used to check websites not found in the domain list.

Free Update Function

After each start, SiteKiosk updates the local filter criteria database if necessary.

User Feedback

Users are given the opportunity to send an objection for websites that seem to be incorrectly blocked.

Scheduled Activation

The filter function can be activated and deactivated at specific times.

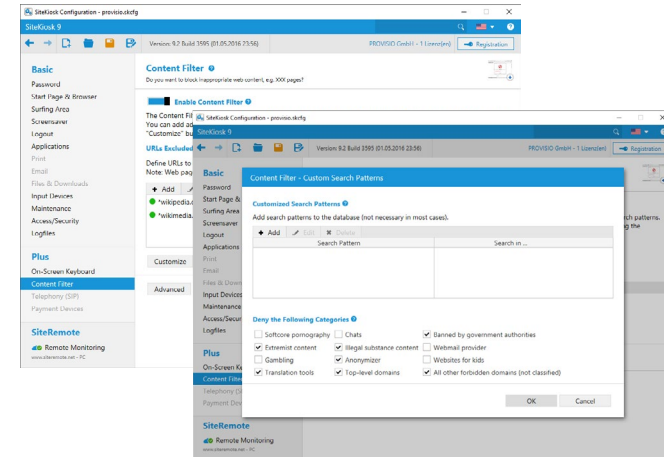


Figure 22: Content filter

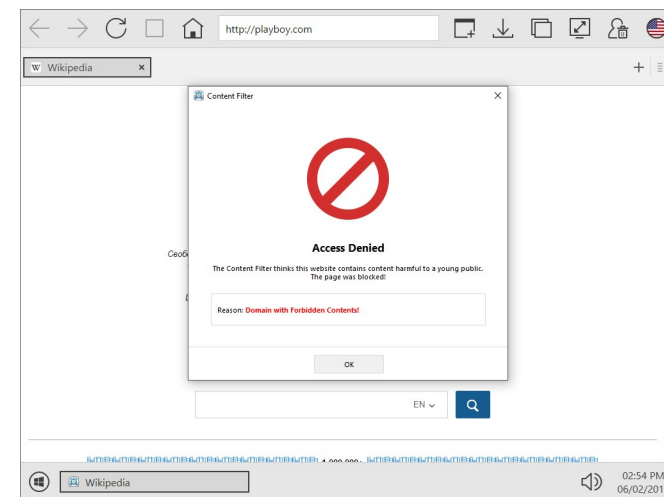


Figure 23: Filtering in real time

Plus Version

Payment for Usage of Computers - Payment Devices

With the Plus version, SiteKiosk provides an interface for a variety of time logging, access control, and automated payment devices. SiteKiosk can communicate with supported coin validators, credit card readers and bill acceptors. All major currencies are supported. Using the supplied function “payment simulation”, you can test payment functions without hardware.

Surfing-zone Rates

The feature “Zone Rates” allows you to charge different amounts based on the internet address. With the “Daily Rate” you can charge for the use of the computer depending on the date and time of day (Happy Hours). SiteKiosk can also charge for goods and services where a one-time payment is due. Charges can also be set up for programs usage, file downloads, and printing.

VoIP telephony

This feature allows you to provide telephone services over the internet protocol (VoIP) that is operated through a SIP gateway of your choice. This allows users to call any phone number at home and abroad as well as any cell phone number and text messages. You can charge rates per minute for providing phone and SMS services.

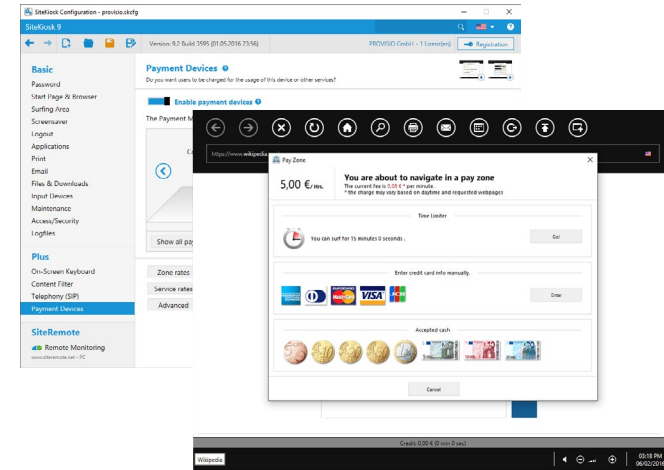


Figure 24: Payment function

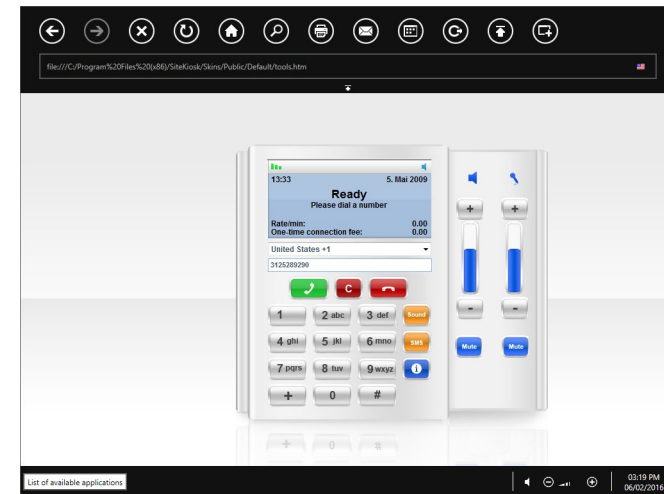


Figure 25: VoIP Telephony

SiteKiosk Android

Mobile Device Security and Reliability

SiteKiosk Android allows you to operate tamper-proof and reliable tablet devices in a public environment. SiteKiosk Android protects against intrusion and keeps your Android devices running reliably.

Secured Browser

With SiteKiosk Android's integrated browser you can limit access to certain websites or allow open web surfing and use the optional content filter. In order to protect the privacy of the user, the browser will automatically reset to its original state after the user's session is over.

Launcher and App-Control

The launcher function of SiteKiosk Android lets you set up allowed apps on the device to one app or multiple apps. With SiteKiosk one app can be started automatically.

Digital Signage

Using our remote maintenance system, SiteRemote, you can create and publish digital signage campaigns to SiteKiosk Android clients.

Remote Maintenance and GPS Location Tracking

With SiteRemote you can remotely manage and monitor your SiteKiosk Android devices, e.g. create reports and change configurations. Using the GPS tracking feature, you can also determine the current GPS location of your tablets in SiteRemote.

Facial Recognition

SiteKiosk Android also has a facial recognition feature to control the screensaver.

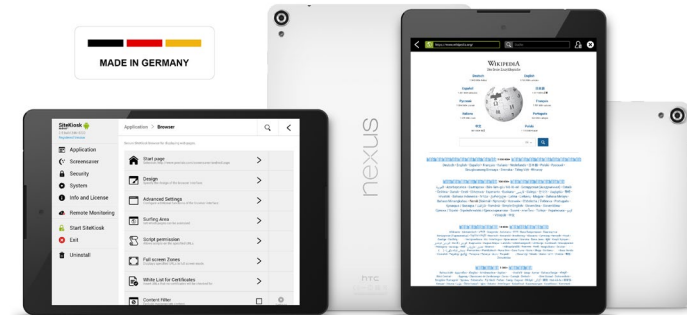


Figure 26: SiteKiosk Android

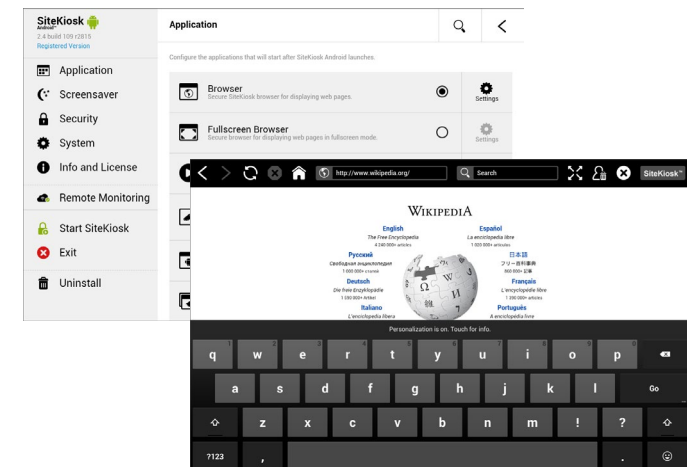


Figure 27: SiteKiosk Android configuration and keyboard

Which version is right for you?



Whether Windows or Android, SiteKiosk is the right choice!

With SiteKiosk your computers and devices in an unattended public environment are secured. Free trial versions will help you to decide which solution is the right one for your needs.



Our Guarantee

No monthly costs! After you purchase, the SiteKiosk licenses belong to you. Included with your purchase are updates including new major versions and standard technical support free of charge for one year from the date of purchase. After that year, you can decide if you want to continue receiving updates and support for a one-time charge (no subscription).

In either case you can continue to use your existing SiteKiosk license for as long as you like.



Supported operating systems:

-  Windows 10, 8, 7, Embedded
-  Android 4.0 or higher



Features	SiteKiosk Android Page 15	SiteKiosk Windows Basic Page 9	SiteKiosk Windows Plus Page 13
12 months free updates	✓	✓	✓
Configuration tool	✓	✓	✓
OS & Browser lockdown	✓	✓	✓
Auto start + Shell replacement	✓	✓	✓
Scheduled shutdown & restart	✓	✓	✓
Session reset after idle time	✓	✓	✓
Watchdog	✓	✓	✓
Display in fullscreen mode	✓	✓	✓
Remote Monitoring*	✓	✓	✓
Digital Signage*	✓	✓	✓
Wide selection of browser interfaces	✓	✓	✓
Customizable user interface	✓	✓	✓
Logout (Clear history)	✓	✓	✓
Start page templates	✗	✓	✓
URL access restricting	✓	✓	✓
Execute programs you specified	✓	✓	✓
Printing	✓	✓	✓
Folder/file access management	✗	✓	✓
On-screen keyboard	✓	✗	✓
Internet content filter	✓	✗	✓
VoIP phone support	✗	✗	✓
Charging for PC usage	✗	✗	✓
Payment device support	✗	✗	✓

* Requires that you either set up a team at www.siteremote.net or run your own SiteRemote server. This service may be subject to additional charges.

Free Trial Version

Why thousands of customers worldwide rely on SiteKiosk to secure public Windows and Android computers:



Experience

SiteKiosk software has been under constant development for more than 20 years.



World market leader

SiteKiosk is the kiosk software with the highest number of installations worldwide.



Patented technology

SiteKiosk is licensed under US patent numbers 6078848 and 5761071.



Awards

SiteKiosk is the winner of several key Internet awards.



Free customer support

Try before you buy

Fully test all of SiteKiosk's features and functions prior to purchase.

Non-Profit Version

For non-profit organizations, such as recognized libraries and youth centers, we offer SiteKiosk Windows Non-profit version at a low price. Non-profit status verification is required.

Price Information

Price information is available in our online store at www.provisio.com.

A [price list](#) is also available on our website as a PDF file.

PROVISIO LLC
Miami, USA
www.provisio.com

PROVISIO GmbH
Münster, Germany
www.provisio.com