



SiteKiosk Windows

Quick Setup & Uninstallation Guide

 Windows 10	 Windows 8	 Windows 7	 Chrome	 Internet Explorer
Compatible	Compatible	Compatible	Supported	Supported

System Requirements

Operating system

Windows 10 32/64bit, Windows 8.x 32/64bit, Windows 7 32/64bit, Embedded POSReady 7, Embedded Standard 7, Windows Embedded 8 Industry. Note: Windows RT is not supported.

Browser

Internet Explorer 10 or higher

Processor

Intel or AMD x86 CPU at > 1 GHz (2.0 GHz or more recommended)

Memory

2 GB RAM (4 GB recommended)

File system

New Technology File System (NTFS)

Screen resolution

1024 x 768 px or higher at 32 bit color depth

1. Installation

1.1

Download the most current version of SiteKiosk from the following location:

<http://www.provisio.com/en-US/Downloads/Download.aspx?ItemId=1>

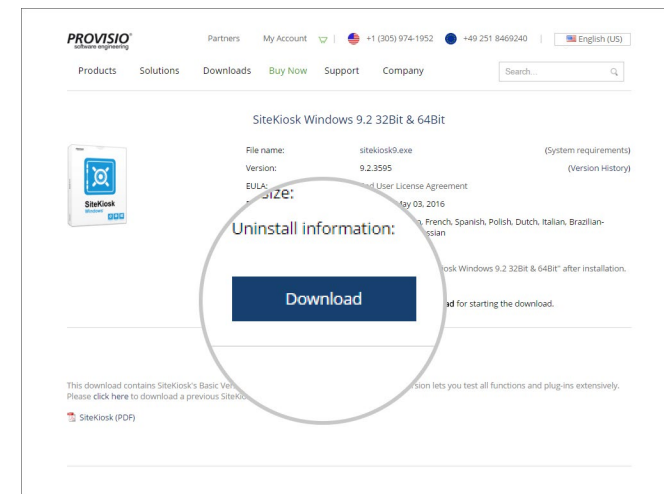


Figure 1.1: SiteKiosk Download Page

1.2

Click **Run** to start the installation and accept the User Account Control request. Then follow the prompts unless you require a customized installation.

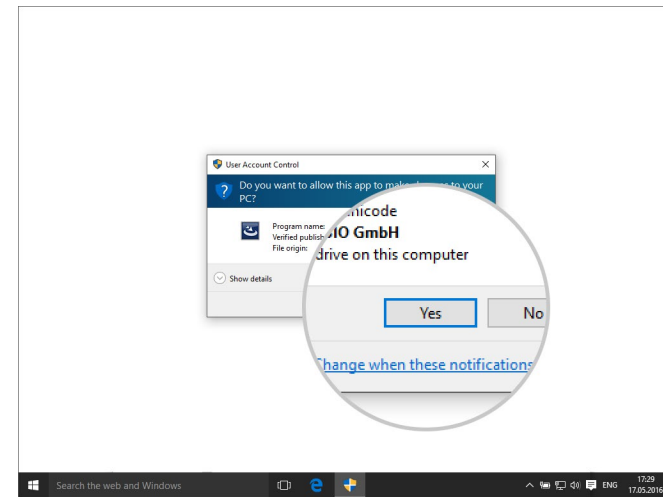


Figure 1.2: User Account Control

1.3

After the installation is complete, you will need to reboot your computer to activate the driver responsible to monitor keyboard input.

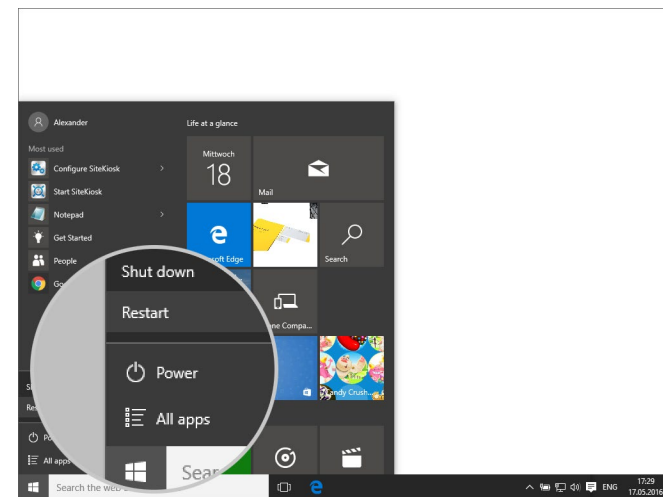


Figure 1.3: Restart your computer

1.4

When the reboot is complete you will notice that SiteKiosk has created its own "Restricted User Account" at the Windows log-in screen.

Note: You will not be required to log into this account at this time.

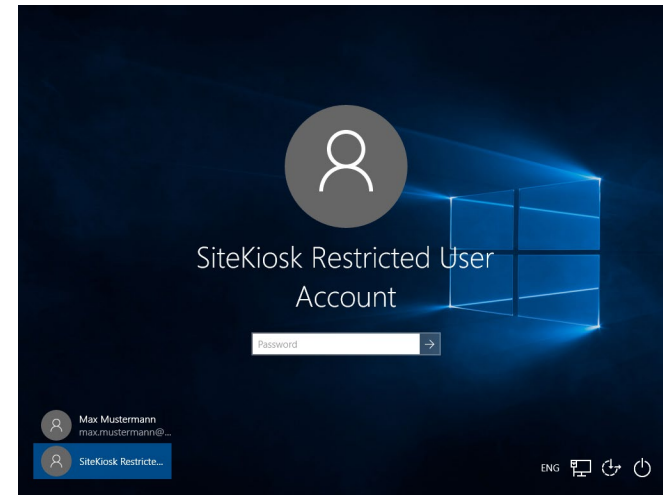


Figure 1.4: SiteKiosk Restricted User Account

2. System Security Manager

The "SiteKiosk Restricted User Account" is a restricted local Windows user account, the default password is **provisio**. To make changes to the SiteKiosk Restricted User Account, e.g. changing the default password, you will not be able to accomplish this through the control panel. You will need to open the System Security Manager (**Start > All Programs > SiteKiosk > System Security Manager**).

Any changes made to the System Security Manager only affect the SiteKiosk Restricted User Account and no other Windows user accounts.

Note: In most cases it will not be necessary to make changes to the default settings of the SiteKiosk Restricted User Account.



Figure 2: SiteKiosk System Security Quick Start

3. Configuration

3.1

You will now need to configure your new SiteKiosk installation. To open the SiteKiosk configuration tool, navigate to **All Programs > SiteKiosk > Configure SiteKiosk**

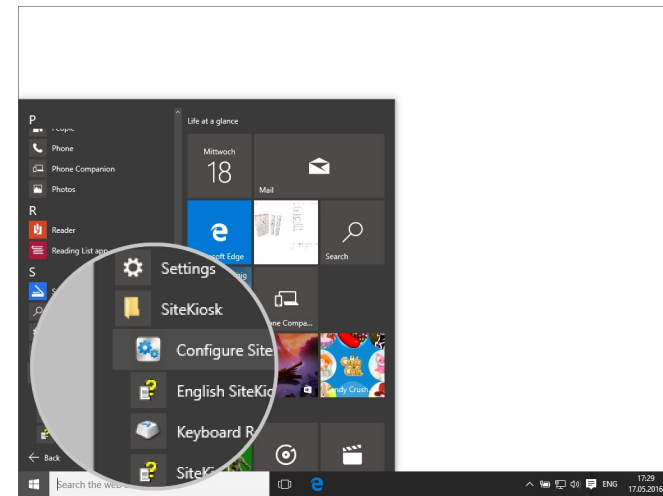


Figure 3.1: SiteKiosk Configuration Tool

3.2

Then you can start to configure the software as required by your business or your personal preference.

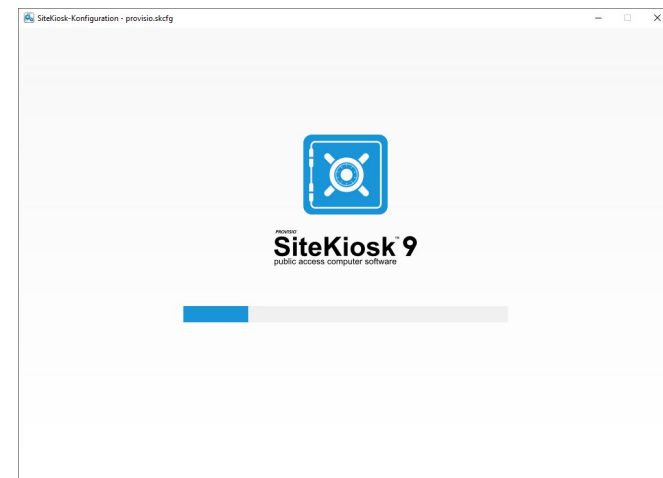


Figure 3.2: Start and loading SiteKiosk Configuration

3.3

The SiteKiosk configuration tool is intuitive and easy to use, you may find help on every section by clicking on the blue question mark. This will then take you to the [SiteKiosk helpfile](#) which explains each section/feature in detail.

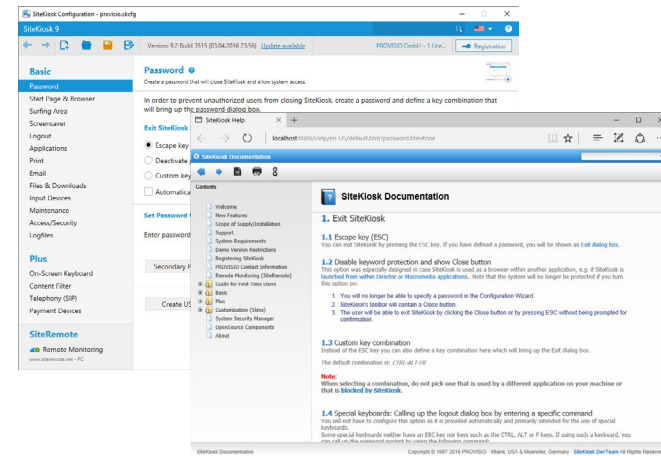


Figure 3.3: SiteKiosk Configuration Documentation

3.4

The options/features in the tree view on the left of the configuration tool are grouped by the type of license you will decide to purchase. For example the screenshot at the right illustrates features supported if you purchase the SiteKiosk Basic Version.

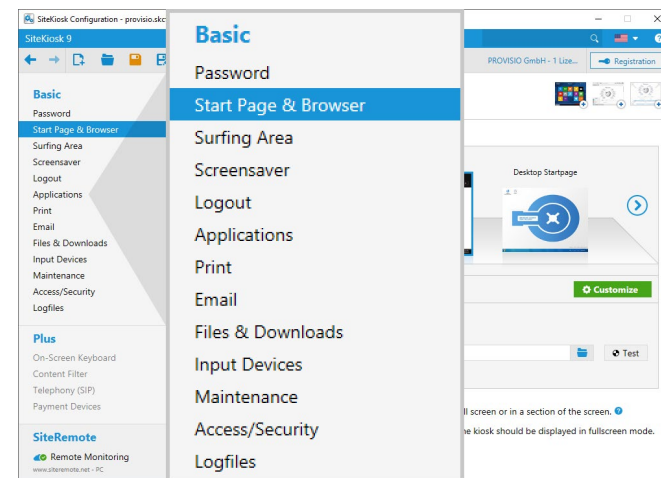


Figure 3.4: SiteKiosk Basic Version

4. Start SiteKiosk

Once you have completed configuring the software, you are now either ready to view the changes you have made or completely lock down the machine for deployment. To start SiteKiosk you will navigate to **All programs > SiteKiosk > Start SiteKiosk**. This will take you to the SiteKiosk Quick Start Options.

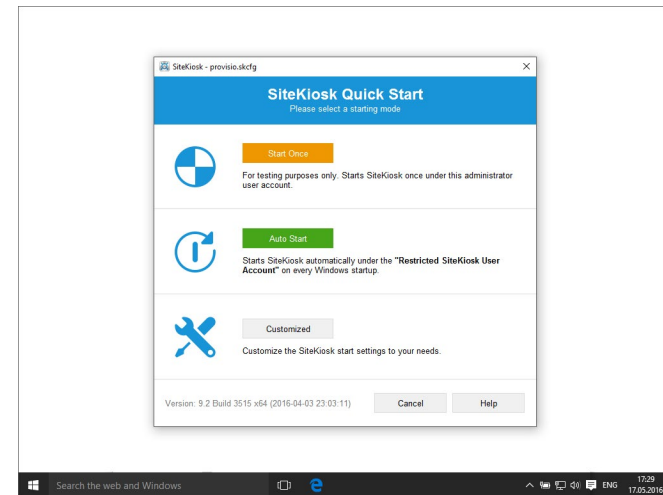
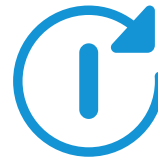


Figure 4: SiteKiosk Quick Start Options



Start Once

SiteKiosk will be launched only once under the Windows administrator account applying the current configuration, for example for testing purposes. This is if you just need to see the changes and not ready to lock down the machine.



Auto Start

Auto start is the recommended method to run SiteKiosk and should be selected for normal operating mode after you have successfully tested the configuration by starting in run-once mode.



Customized

Should only be used if you want to customize the start settings of SiteKiosk to meet special requirements, e.g. if you want to use another Windows user to run SiteKiosk (a local or domain account) or you do not want to use the Windows shell replacement mode.

5. Uninstalling SiteKiosk

Option A - Standard Uninstalling:

5.1

Go to **Control Panel > All Control Panel Items > Programs and Features** and select the **SiteKiosk** entry in the list of programs.

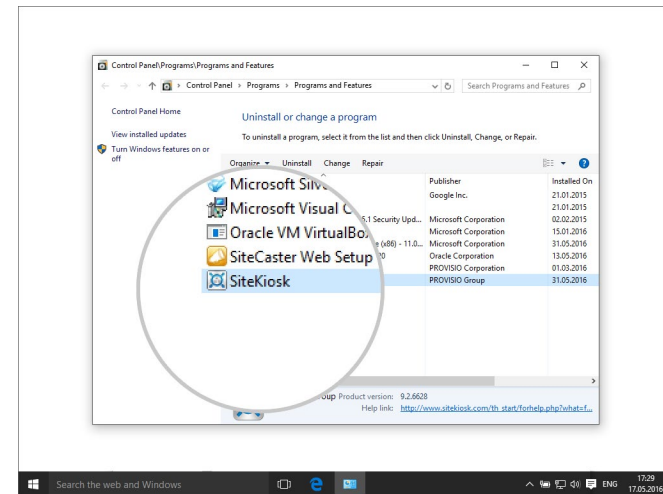


Figure 5.1: Programs and Features

5.2

Click **Uninstall** and follow the prompts until the uninstall process is finished.

Note: Select the standard uninstall process, if you want to keep the licence and the configuration files of SiteKiosk.

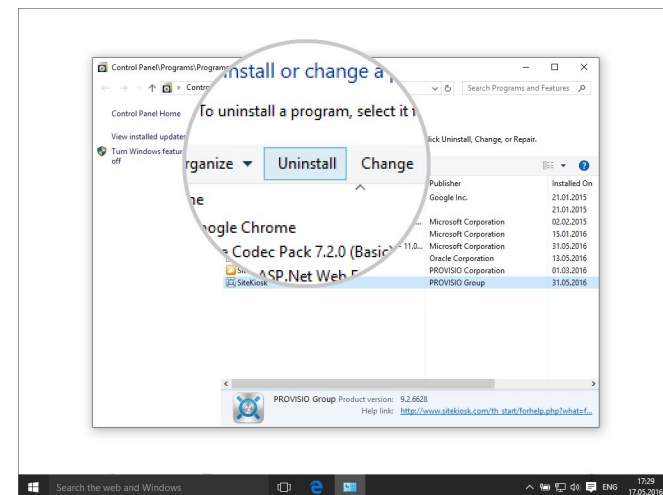


Figure 5.2: Uninstall SiteKiosk

Option B - Custom Uninstalling:

5.3

In **Control Panel > All Control Panel Items > Programs and Features** select the **SiteKiosk** entry and click **Change**.

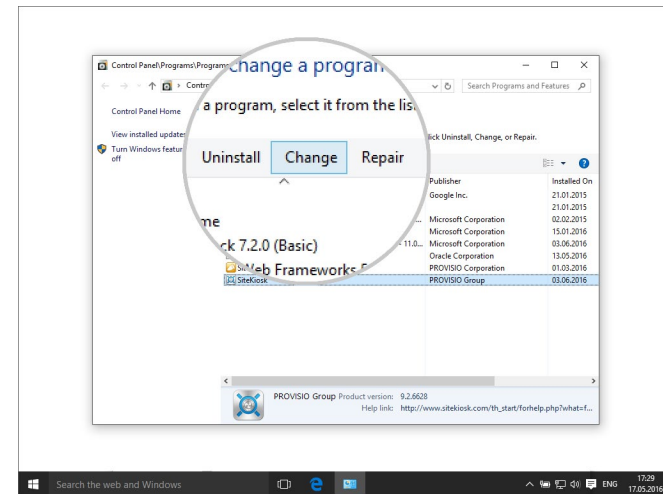


Figure 5.3: Programs and Features

5.4

Wait until the **SiteKiosk - Install Wizard** opens and select in the **Program Maintenance** page the option **Remove**.

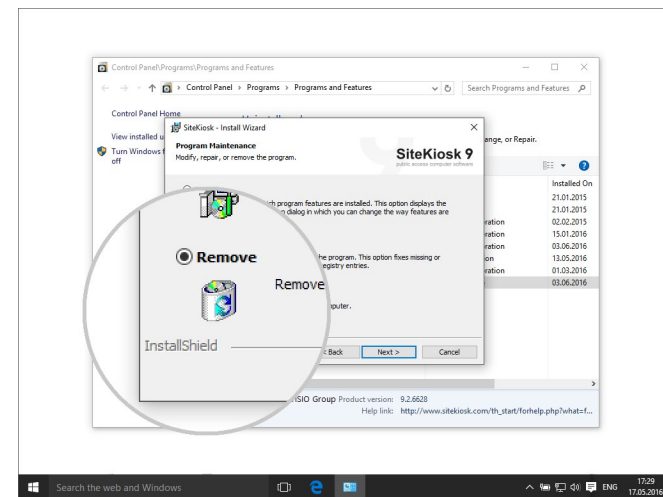


Figure 5.4: Remove SiteKiosk

5.5

In the **Remove the Program** page check the checkbox **Automatic removal of all created data** and confirm by pressing **Remove**.

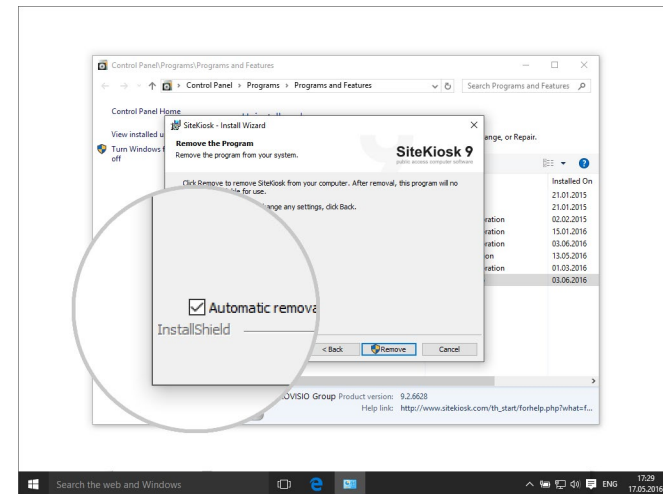


Figure 5.5: Automatic removal of all created data

5.6

Follow the prompts and finally click **Finish** to reboot the computer.

Note: Select the custom uninstalling process, if you want to remove all data and folders of the SiteKiosk installation.

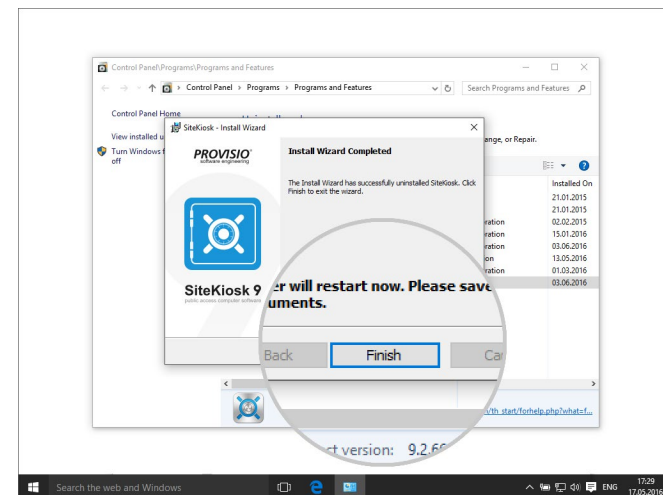


Figure 5.6: Finish the custom uninstalling process